

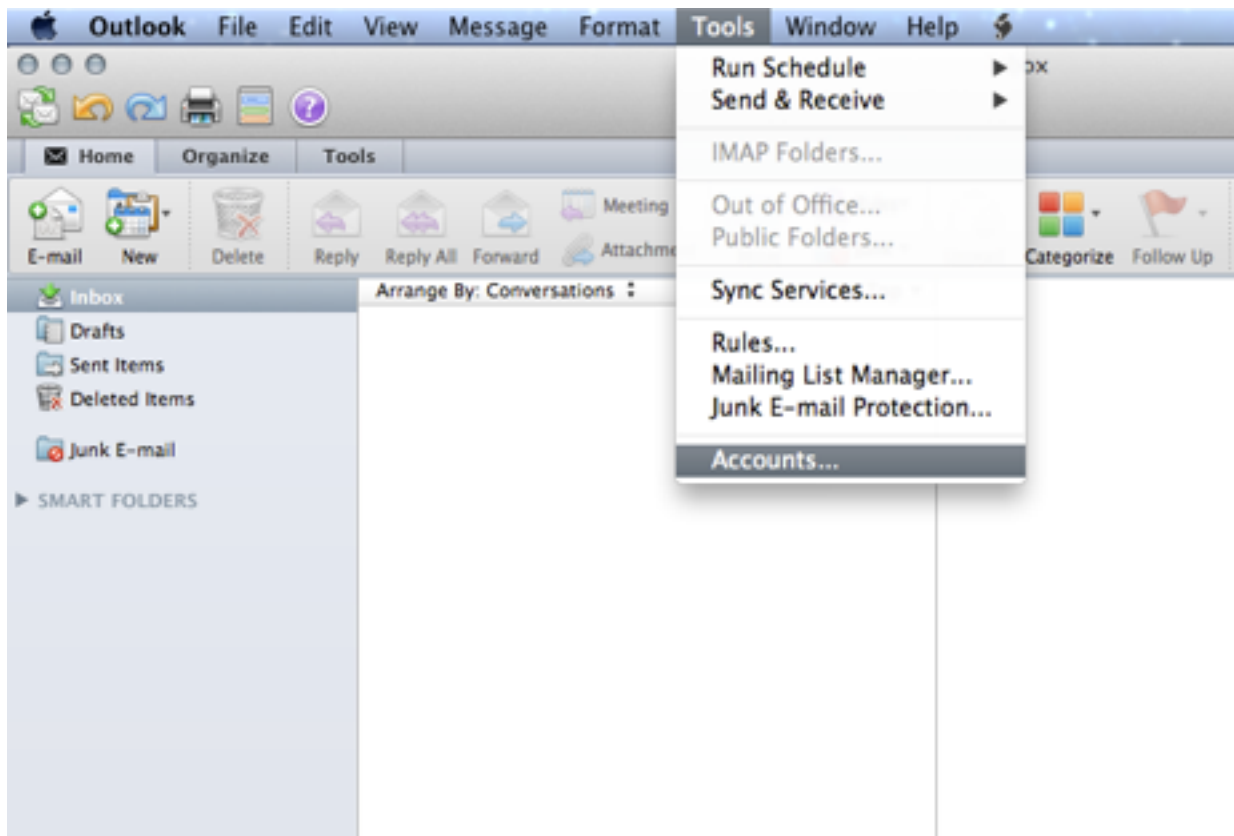
## eMail configuration & setup for Outlook Clients for Tri8Solutions' hosted e-mail

Congratulations on your website configuration & email hosting with Tri8Solutions

Step by Step Walkthrough (POP)

You will need your incoming mail server, outgoing mail server, full email address, and your email password. You can find these settings by logging into your Mail Central.

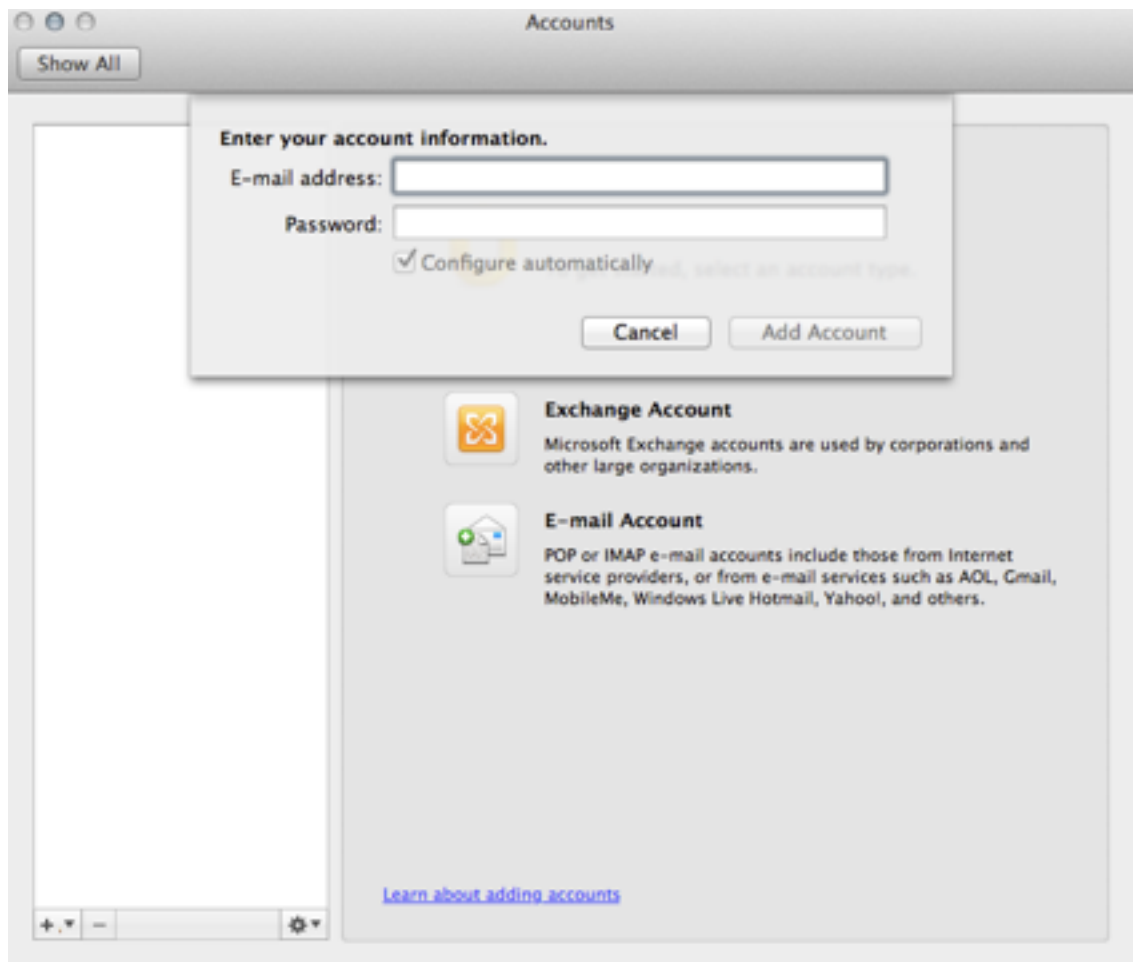
1. Open Outlook
2. Click Tools
3. Click Accounts

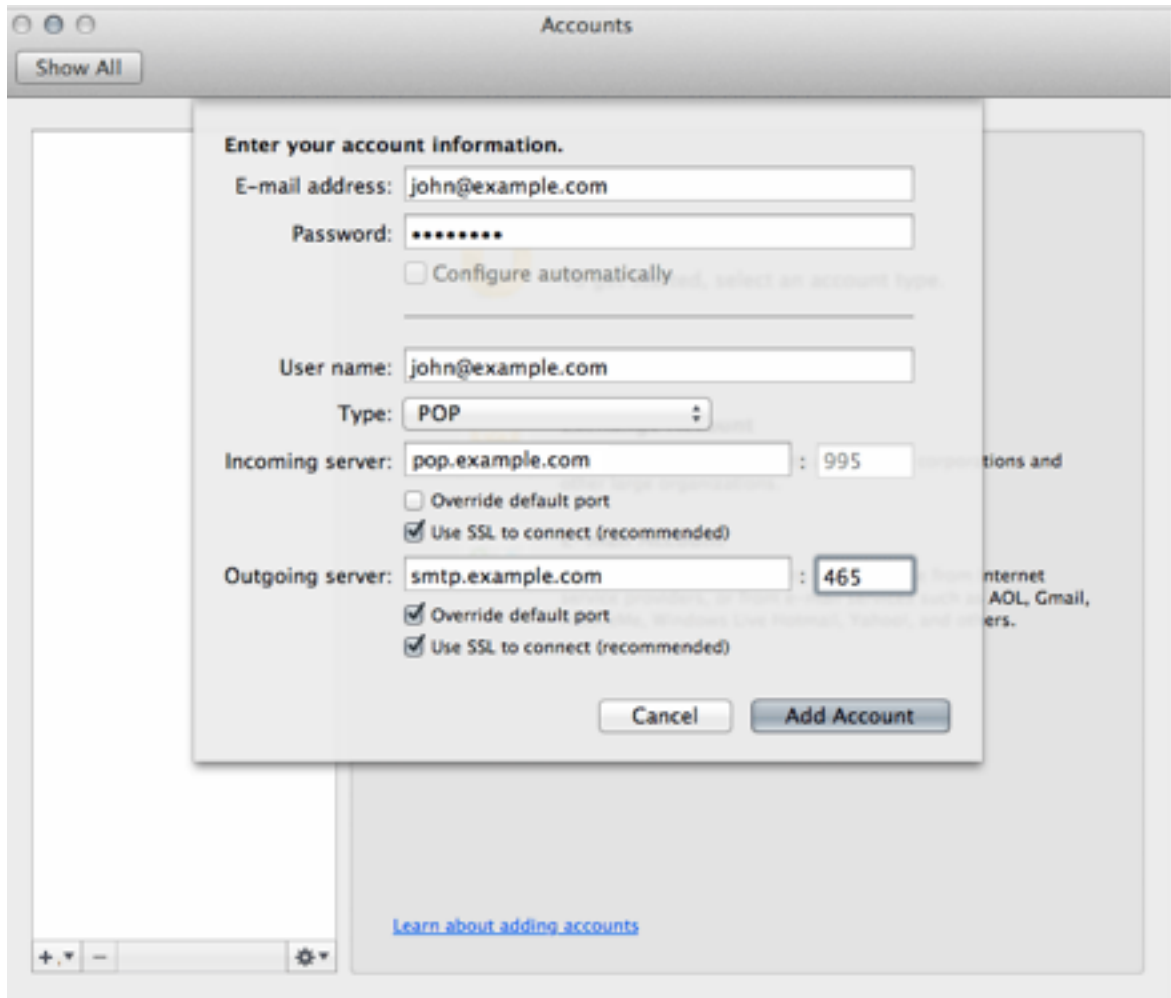


#### 4. Choose Email Account

#### 5. Fill in the following information:

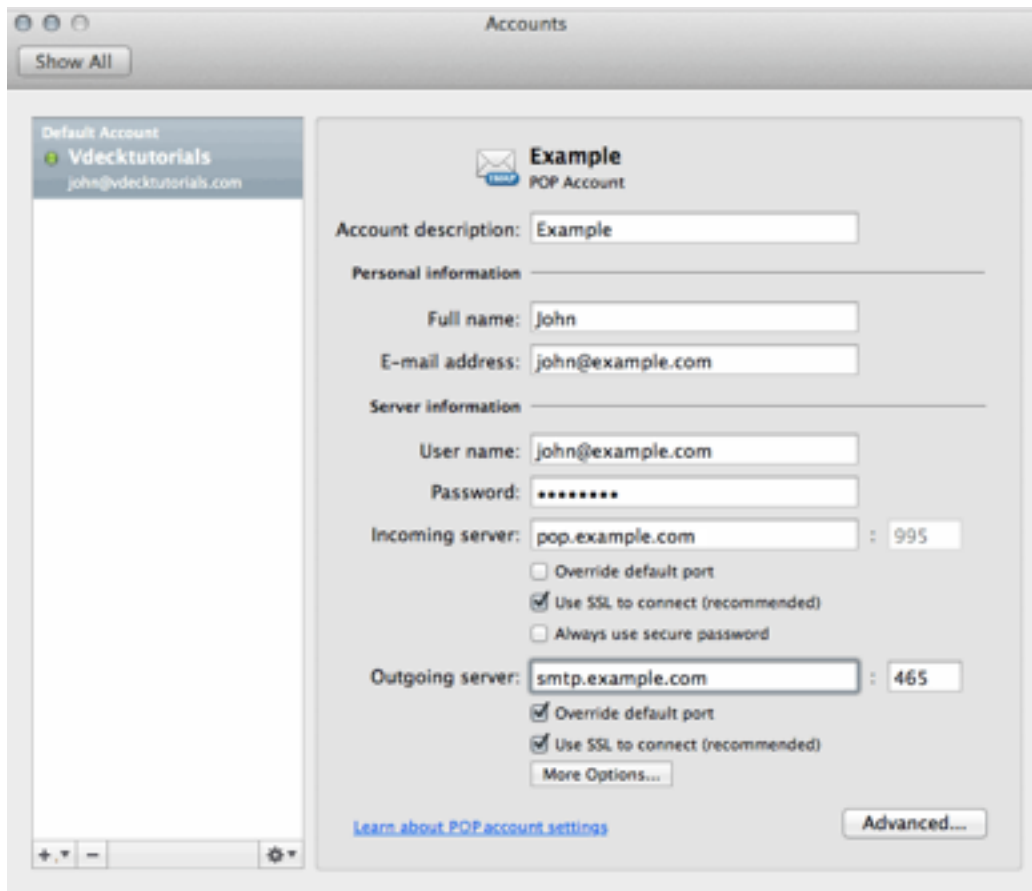
- Email Address: Your full email address
- Password: Your email password
- Configure Automatically: Unchecked
- User Name: Your full email address
- Type: POP
- Incoming Server: pop.startlogic.com
- Incoming Server (Port): 110
- Override Default Port (Incoming): Checked.
- Use SSL to Connect (Incoming): Optional. If checked, change Incoming Server (Port) to 995.
- Outgoing Server: smtp.startlogic.com
- Outgoing Server (Port): 587
- Override Default Port (Outgoing): Checked
- Use SSL to Connect (Outgoing): Optional. If checked, change Outgoing Server (Port) to 465.





6. Click Add Account. This will create the email account, but additional steps are required to make sure it works
7. If needed, go back into Tools, then click Accounts, then choose your Email Account

8. Click More Options - replace example.com with yourdomainname.com or yourdomainname.ca



9. Change Authentication to Use Incoming Server Info

10. Click OK and you're done

